

IMP2 Antibody
Rabbit mAb
Catalog # AP92450**Specification****IMP2 Antibody - Product Information**

| | |
|----------------------------|------------------------|
| Application | WB, IHC, ICC |
| Primary Accession | O9Y6M1 |
| Reactivity | Rat |
| Clonality | Monoclonal |
| Other Names | |
| gf2bp2; IMP2; p62; VICKZ2; | |
| Isotype | Rabbit IgG |
| Host | Rabbit |
| Calculated MW | 66121 Da |

IMP2 Antibody - Additional Information

| | |
|------------------------------|---|
| Dilution | WB~~1:1000 IHC~~1:100~500 ICC~~N/A |
| Purification | Affinity-chromatography |
| Immunogen | A synthesized peptide derived from human IMP2 |
| Description | Binds to the 5'-UTR of the insulin-like growth factor 2 (IGF2) mRNAs. Binding is isoform-specific. May regulate translation of target mRNAs. |
| Storage Condition and Buffer | Rabbit IgG in phosphate buffered saline , pH 7.4, 150mM NaCl, 0.02% sodium azide and 50% glycerol. Store at +4°C short term. Store at -20°C long term. Avoid freeze / thaw cycle. |

IMP2 Antibody - Protein Information**Name** IGF2BP2**Synonyms** IMP2, VICKZ2**Function**

RNA-binding factor that recruits target transcripts to cytoplasmic protein-RNA complexes (mRNPs). This transcript 'caging' into mRNPs allows mRNA transport and transient storage. It also modulates the rate and location at which target transcripts encounter the translational apparatus and shields them from endonuclease attacks or microRNA-mediated degradation (By similarity). Preferentially binds to N6-methyladenosine (m6A)-containing mRNAs and increases their stability (PubMed:29476152). Binds to the 5'-UTR of the insulin-like growth factor 2 (IGF2) mRNAs (PubMed:29476152).

href="http://www.uniprot.org/citations/9891060" target="_blank">9891060). Binding is isoform- specific. Binds to beta-actin/ACTB and MYC transcripts. Increases MYC mRNA stability by binding to the coding region instability determinant (CRD) and binding is enhanced by m6A-modification of the CRD (PubMed:29476152).

Cellular Location

Nucleus. Cytoplasm. Cytoplasm, P-body. Cytoplasm, Stress granule. Note=Localized in cytoplasmic mRNP granules containing untranslated mRNAs. Localizes at the connecting piece and the tail of the spermatozoa. In response to cellular stress, such as oxidative stress, recruited to stress granules

Tissue Location

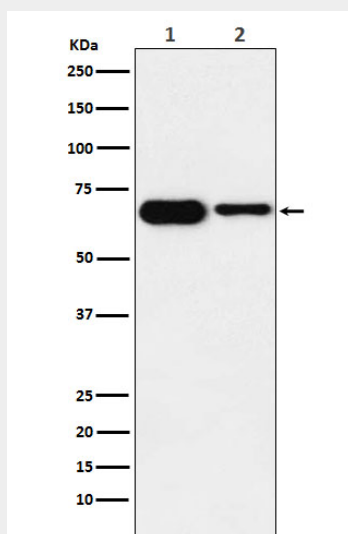
Expressed in oocytes, granulosa cells of small and growing follicles, Leydig cells, spermatogonia and semen (at protein level). Expressed in testicular cancer (at protein level). Expressed weakly in heart, placenta, skeletal muscle, bone marrow, colon, kidney, salivary glands, testis and pancreas. Detected in fetal liver, fetal ovary, gonocytes and interstitial cells of the testis

IMP2 Antibody - Protocols

Provided below are standard protocols that you may find useful for product applications.

- [Western Blot](#)
- [Blocking Peptides](#)
- [Dot Blot](#)
- [Immunohistochemistry](#)
- [Immunofluorescence](#)
- [Immunoprecipitation](#)
- [Flow Cytometry](#)
- [Cell Culture](#)

IMP2 Antibody - Images



Western blot analysis of IMP2 expression in (1) SH-SY5Y cell lysate; (2) Mouse heart lysate.